



## Granville Lime Kiln Lane

### Alton, Stoke-On-Trent, ST10 4AR

Nestled in the picturesque surroundings of Lime Kiln Lane, Alton, this charming character cottage offers a delightful retreat in a tranquil rural setting. With its traditional features and inviting atmosphere, this property is perfect for those seeking a peaceful lifestyle while still being close to local amenities.

Upon entering, you are greeted by two spacious reception rooms, each adorned with log burners that create a warm and cosy ambiance, ideal for relaxing evenings or entertaining guests. The generous layout of these rooms provides ample space for both comfort and functionality, making them perfect for family gatherings or quiet nights in.

The cottage boasts two large double bedrooms, each offering a serene space to unwind after a long day. The elevated position of the property allows for far-reaching views of the stunning countryside, providing a picturesque backdrop that changes with the seasons.

£995 Per Calendar Month

# Granville Lime Kiln Lane

Alton, Stoke-On-Trent, ST10 4AR

 2

 1

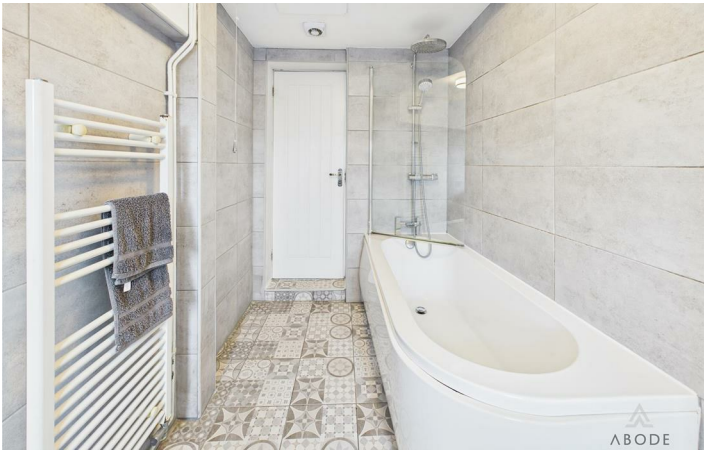
 2



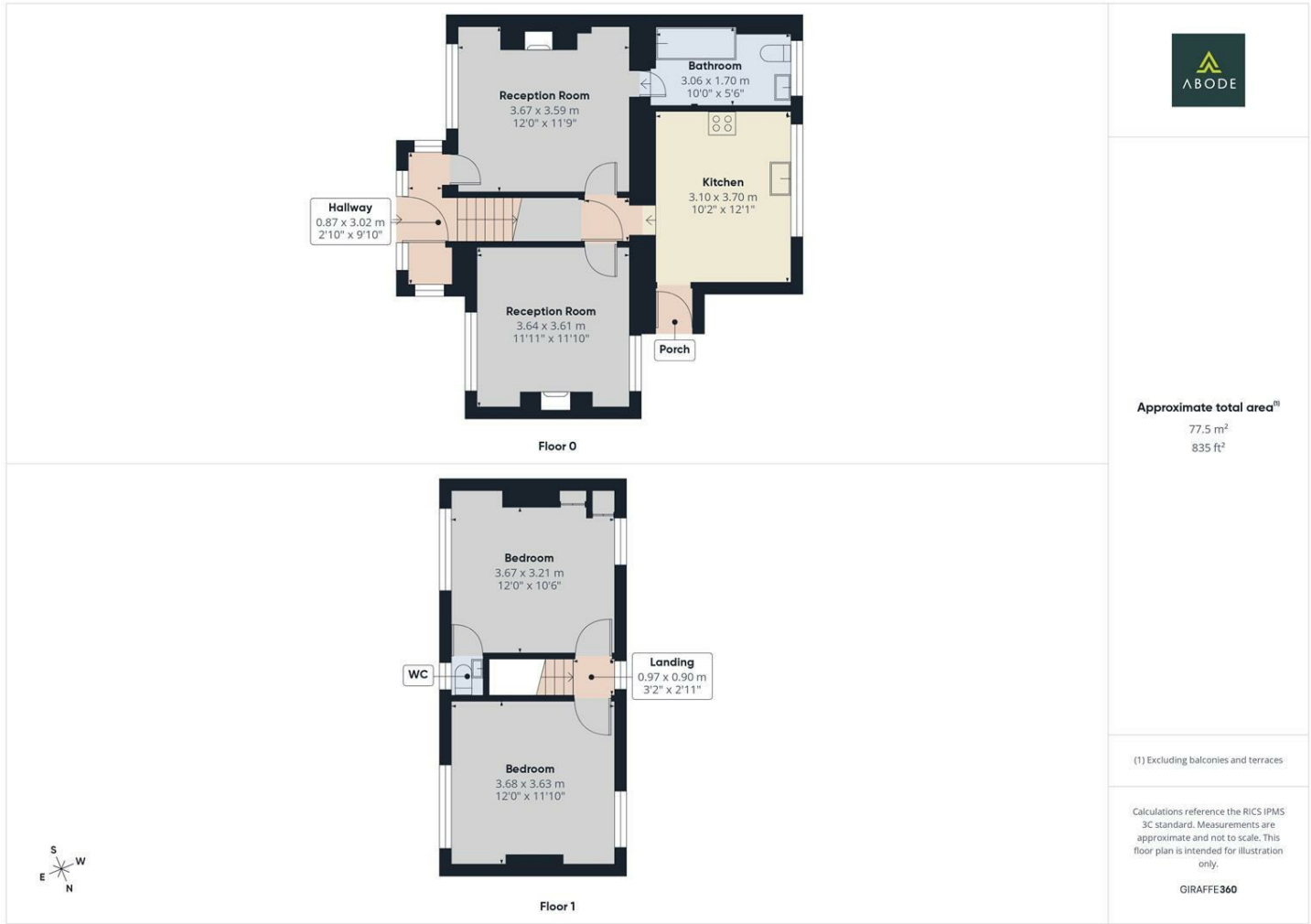


[Directions](#)





Floor Plan



These particulars, whilst believed to be accurate are set out as a general outline only for guidance and do not constitute any part of an offer or contract. Intending purchasers should not rely on them as statements of representation of fact, but must satisfy themselves by inspection or otherwise as to their accuracy. No person in this firms employment has the authority to make or give any representation or warranty in respect of the property.

1 Cross Street, Cheadle, ST10 1NP  
Tel: Email: [lettings@abodemidlands.co.uk](mailto:lettings@abodemidlands.co.uk)

Energy Efficiency Rating		
	Current	Potential
Very energy efficient - lower running costs		
(92 plus) <b>A</b>		
(81-91) <b>B</b>		
(69-80) <b>C</b>		
(55-68) <b>D</b>		
(39-54) <b>E</b>		
(21-38) <b>F</b>		
(1-20) <b>G</b>		
Not energy efficient - higher running costs		
England & Wales		EU Directive 2002/91/EC